

PRESENT BY

Symbol^{ALL}

80 PNEUMATIC SYSTEM SYMBOLS PDF

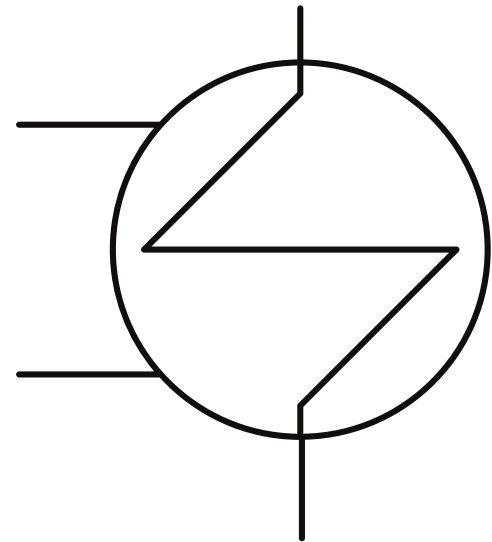
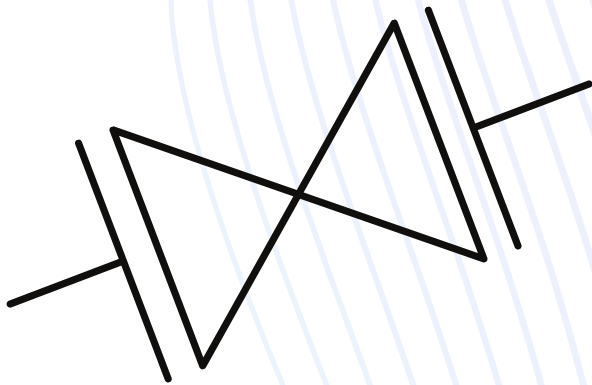
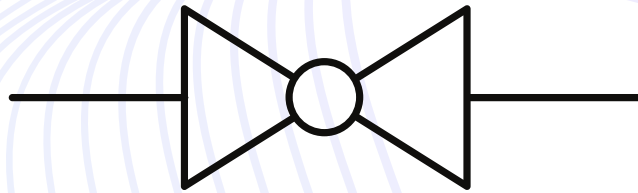




TABLE OF CONTENTS

01

AIR LINE EQUIPMENT >

- AIR TANK
- AND VALVE
- AUTO DRAIN VALVE
- BOOSTER REGULATOR
- CHECK VALVE
- COOLER
- DIGITAL FLOW SWITCH
- FILTER WITH AUTO DRAIN
- FILTER-REGULATOR-LUBRICATOR WITH AUTO DRAIN
- LUBRICATOR
- MEMBRANE AIR DRYER
- OR VALVE
- PRESSURE GAUGE
- PRESSURE SOURCE
- PRESSURE SWITCH
- PRESURE REGULATOR
- QUICK EXHAUST VALVE
- SELF SEAL FITTING
- SILENCER
- TUBE





02

ACTUATOR / CYLINDER
/ GRIPPER



- ACTUATOR, COMBINED LINEAR - ROTARY
- ACTUATOR, ROTARY
- CYLINDER, CLAMPING
- CYLINDER, DOUBLE ACTING
- CYLINDER, DOUBLE ACTING, DUAL STROKE
- CYLINDER, DOUBLE ACTING, WITH AIR CUSHION
- CYLINDER, DOUBLE ACTING, WITH LOCK
- CYLINDER, DOUBLE ACTING, WITH MAGNET
- CYLINDER, DUAL PISTON
- CYLINDER, RODLESS
- CYLINDER, SINGLE ACTING, SPRING EXTEND
- CYLINDER, SINGLE ACTING, SPRING EXTEND, WITH MAGNET
- CYLINDER, SINGLE ACTING, SPRING RETURN
- CYLINDER, SINGLE ACTING, SPRING RETURN, WITH MAGNET
- CYLINDER, TANDEM
- GRIPPER, ANGULAR, DOUBLE ACTING
- GRIPPER, ANGULAR, SINGLE ACTING, NO
- GRIPPER, PARALLEL, DOUBLE ACTING
- GRIPPER, PARALLEL, SINGLE ACTING, NC
- GRIPPER, PARALLEL, SINGLE ACTING, NO





03

DIRECTIONAL CONTROL VALVES



- 2/2- WAY VALVE, AIR OPERATED, NC
- 2/2- WAY VALVE, DIRECT OPERATED, NC
- 2/2- WAY VALVE, PILOT OPERATED, NC
- 3/2- WAY VALVE, AIR OPERATED, NC
- 3/2- WAY VALVE, DIRECT OPERATED, NC
- 3/2- WAY VALVE, PILOT OPERATED, NC
- 3/2- WAY VALVE, PILOT OPERATED, NO
- 4/2- WAY VALVE, MECHANICAL OPERATED - TOGGLE LEVER
- 4/3- WAY VALVE, AIR OPERATED
- 4/3- WAY VALVE, MECHANICAL OPERATED - TOGGLE LEVER
- 5/2- WAY VALVE, AIR OPERATED
- 5/2- WAY VALVE, MECHANICAL OPERATED, PUSH BUTTON
- 5/2- WAY VALVE, MECHANICAL OPERATED, TAPPET
- 5/2- WAY VALVE, PILOT OPERATED
- 5/3- WAY VALVE, AIR OPERATED, CLOSED CENTRE
- 5/3- WAY VALVE, AIR OPERATED, EXHAUST CENTRE
- 5-3 WAY VALVE PILOT OPERATED CLOSED CENTRE
- 5/3- WAY VALVE, PILOT OPERATED, EXHAUST CENTRE
- 5/3- WAY VALVE, PILOT OPERATED, PRESSURE CENTRE
- POPPET VALVE





04

PROCESS VALVES

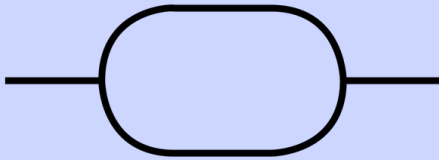


- ANGLE VALVE, 2-WAY
- BALL VALVE, 2- WAY
- BALL VALVE, 3- WAY, L
- BALL VALVE, 3- WAY, T
- BUTTERFLY VALVE, 2-WA
- DDIAPHRAGM VALVE, 2-WAY
- DIAPHRAGM VALVE, 2-WAY, FULL BORE
- DIAPHRAGM VALVE, 2-WAY, TANK
- DIAPHRAGM VALVE, 3-WAY
- FLANGE VALVE, 2-WAY
- GATE VALVE, 2-WAY
- GLOBE VALVE, 2-WAY
- GLOBE VALVE, 3-WAY
- NEEDLE VALVE, 2-WAY
- PINCH VALVE, 2-WAY
- PLUG VALVE, 2-WAY
- PLUG VALVE, 3-WAY, L
- PLUG VALVE, 3-WAY, T
- PROPORTIONAL FLOW CONTROL VALVE, 2-WAY
- SWING-CHECK VALVE, 2-WAY

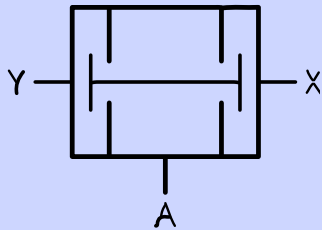


SYMBOL

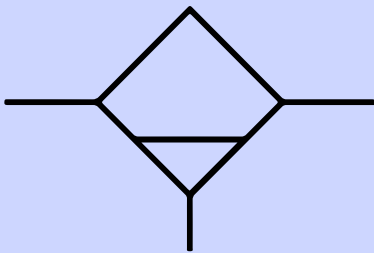
NAME / DESCRIPTION



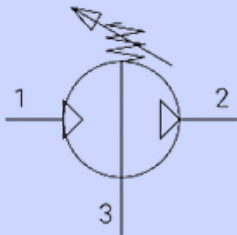
Air tank



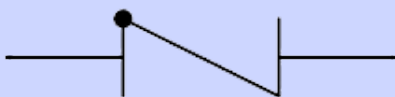
AND valve



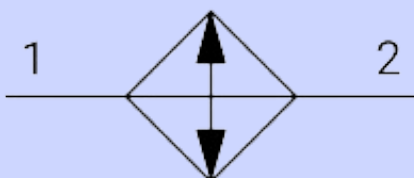
Auto drain valve



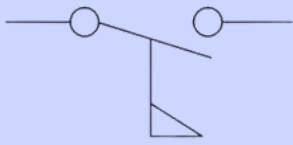
Booster regulator



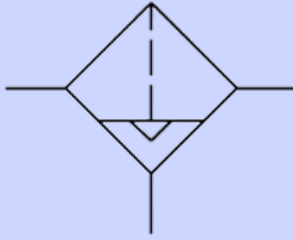
Check valve



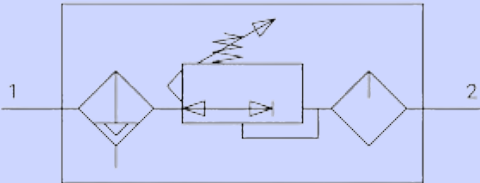
Cooler



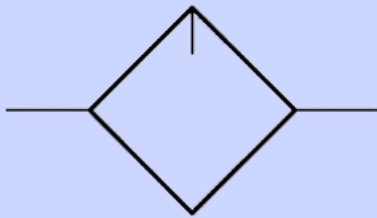
Digital flow switch



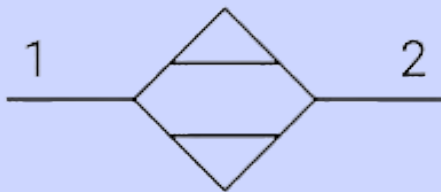
Filter with auto drain



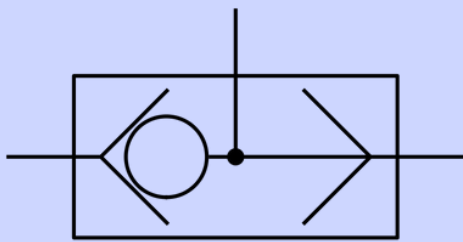
Filter-Regulator-Lubricator with auto drain



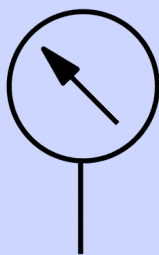
Lubricator



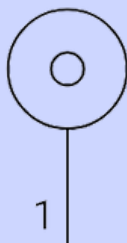
Membrane air dryer



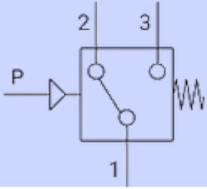
OR valve



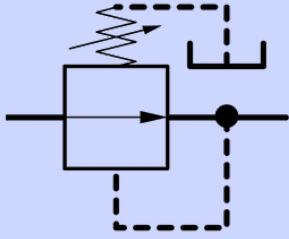
Pressure gauge



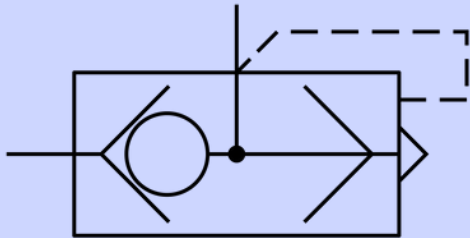
Pressure source



Pressure switch



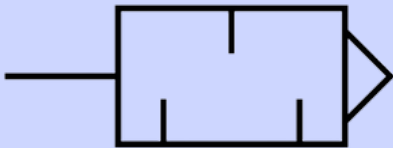
Pressure regulator



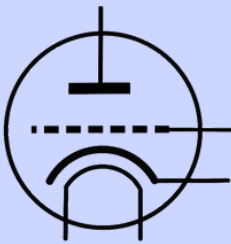
Quick exhaust valve



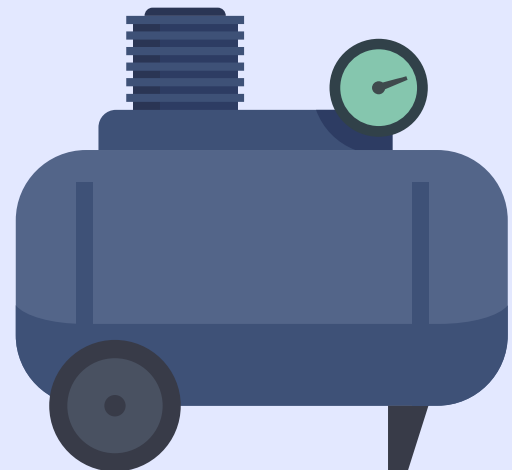
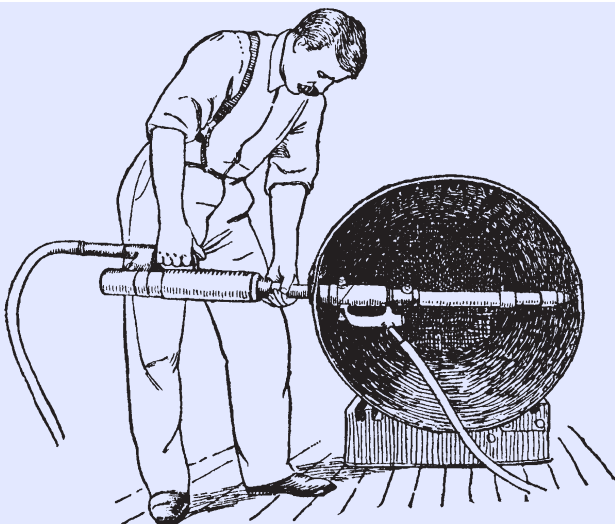
Self seal fitting



Silencer

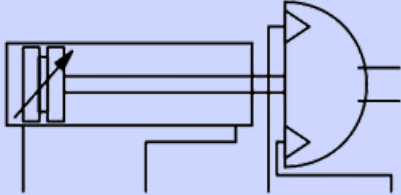


Tube

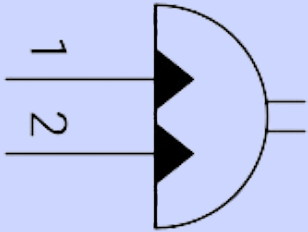


SYMBOL

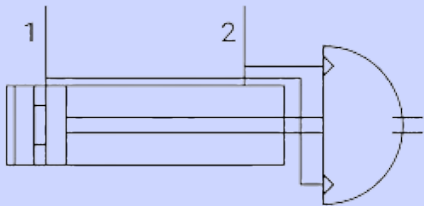
NAME / DESCRIPTION



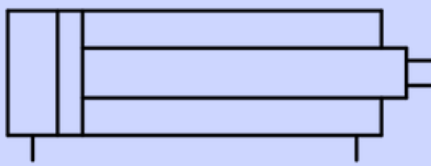
Actuator, combined linear -
rotary



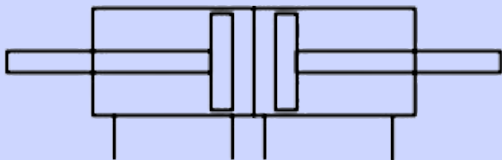
Actuator, rotary



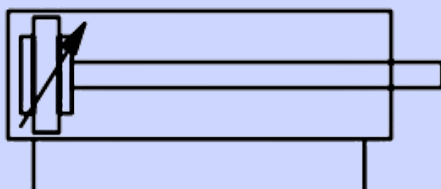
Cylinder, clamping



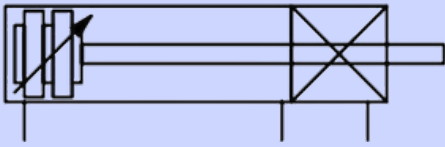
Cylinder, double acting



Cylinder, double acting, dual
stroke



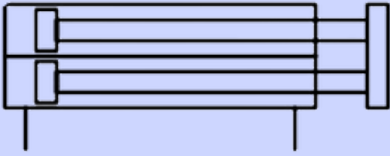
Cylinder, double acting, with
air cushion



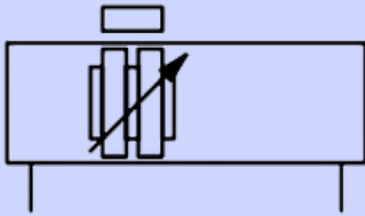
Cylinder, double acting, with lock



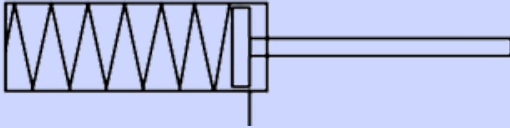
Cylinder, double acting, with magnet



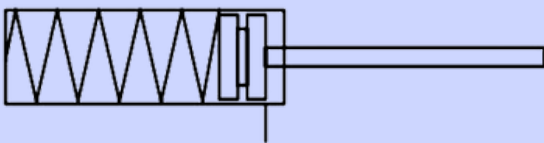
Cylinder, dual piston



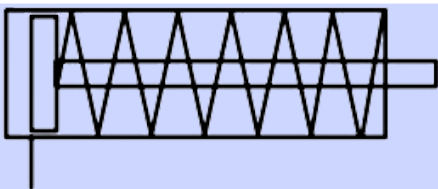
Cylinder, rodless



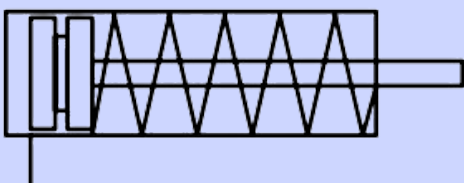
Cylinder, single acting, spring extend



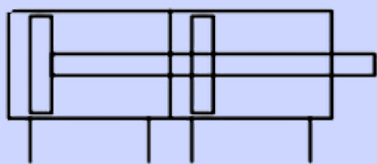
Cylinder, single acting, spring extend, with magnet



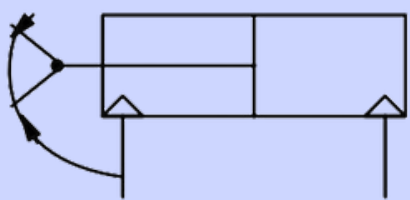
Cylinder, single acting, spring return



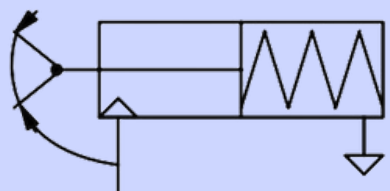
Cylinder, single acting, spring return, with magnet



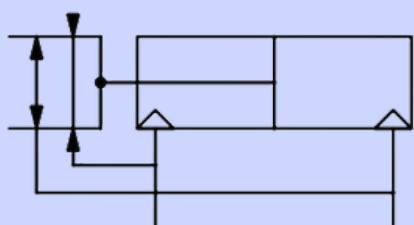
Cylinder, tandem



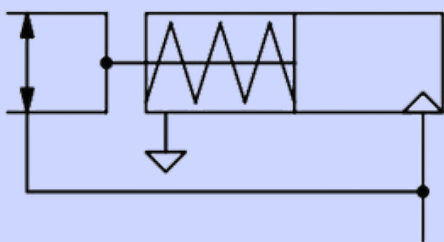
Gripper, angular, double acting



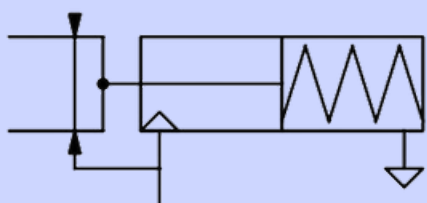
Gripper, angular, single acting,
NO



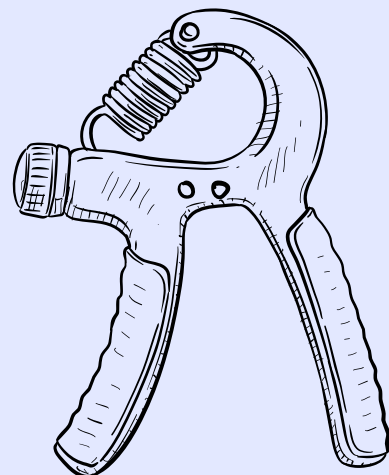
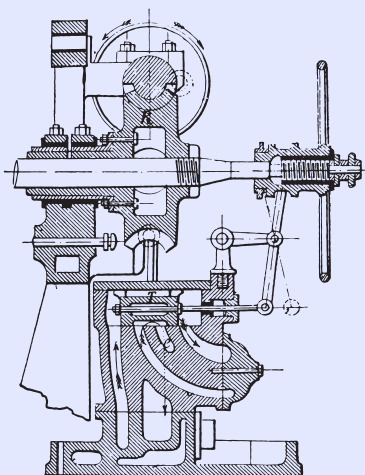
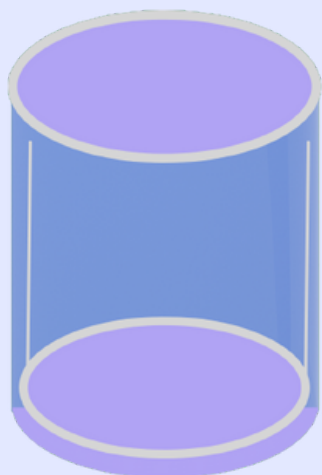
Gripper, parallel, double acting



Gripper, parallel, single acting,
NC

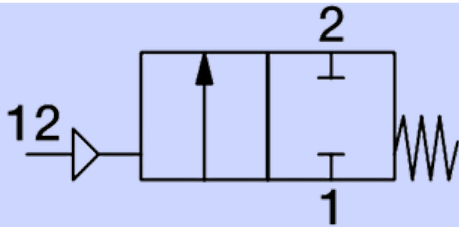


Gripper, parallel, single acting,
NO

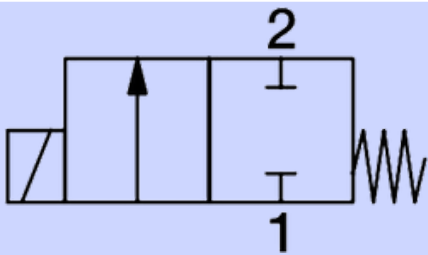


SYMBOL

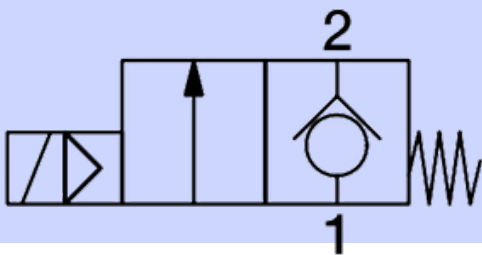
NAME / DESCRIPTION



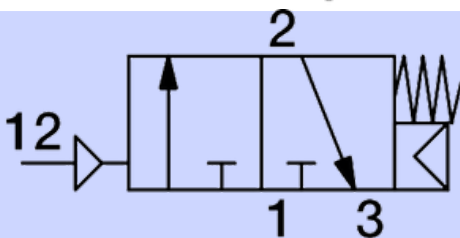
2/2- way valve, air operated,
NC



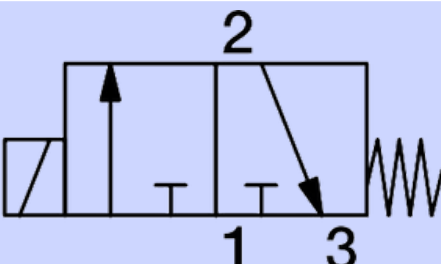
2/2- way valve, direct
operated, NC



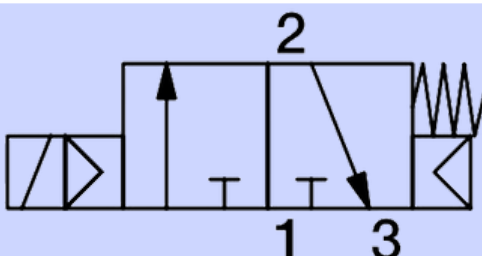
2/2- way valve, pilot operated,
NC



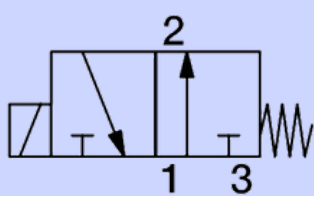
3/2- way valve, air operated,
NC



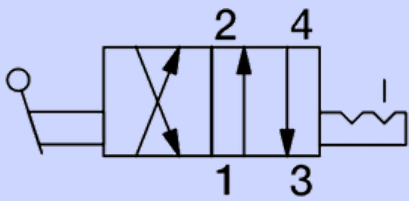
3/2- way valve, direct
operated, NC



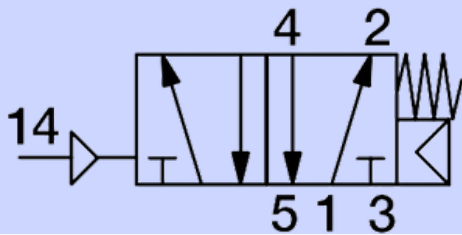
3/2- way valve, pilot operated,
NC



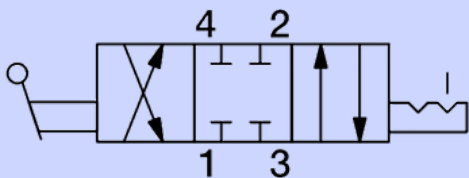
3/2- way valve, pilot operated,
NO



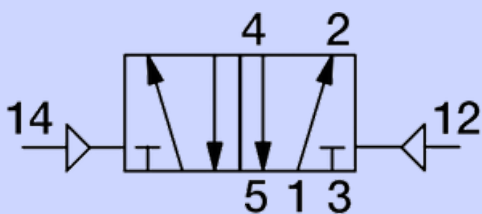
4/2- way valve, mechanical
operated - toggle lever



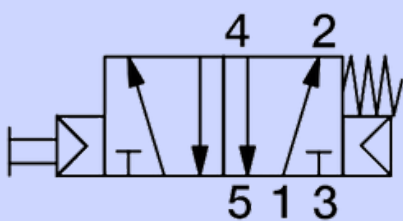
4/3- way valve, air operated



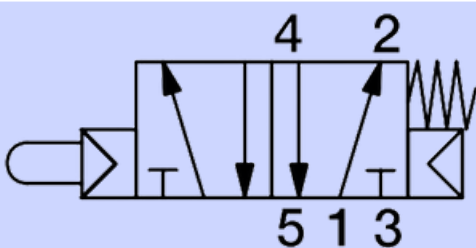
4/3- way valve, mechanical
operated - toggle lever



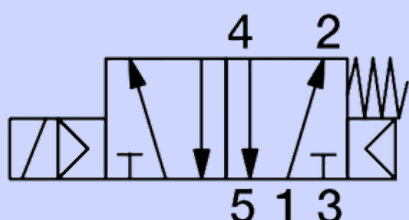
5/2- way valve, air operated



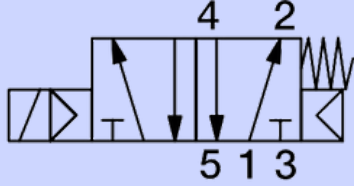
5/2- way valve, mechanical
operated, push button



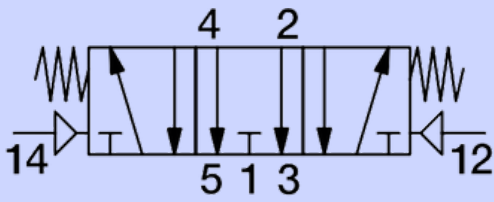
5/2- way valve, mechanical
operated, tappet



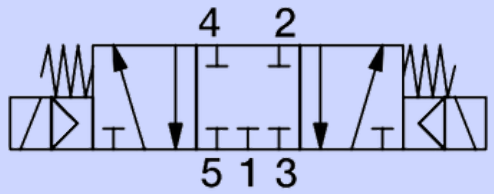
5/2- way valve, pilot operated



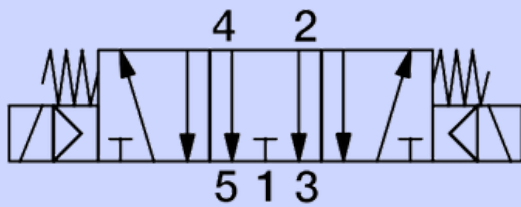
5/3- way valve, air operated,
closed centre



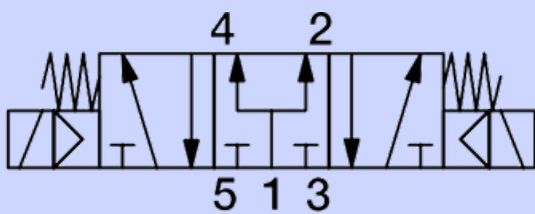
5/3- way valve, air operated,
exhaust centre



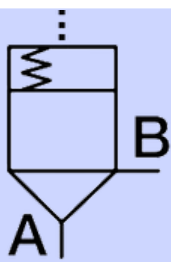
5-3 way valve pilot operated
closed centre



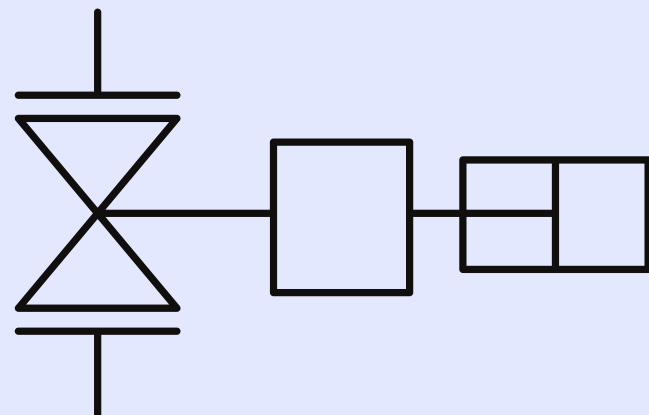
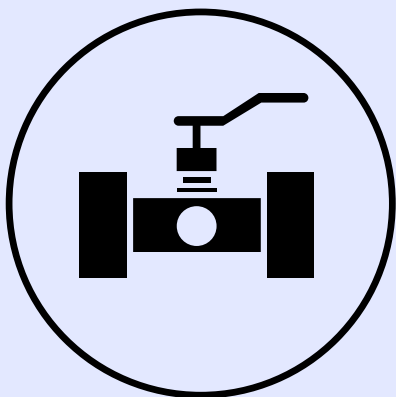
5/3- way valve, pilot operated,
exhaust centre

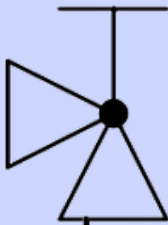
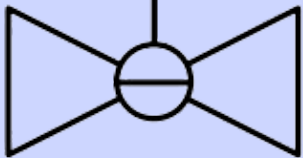
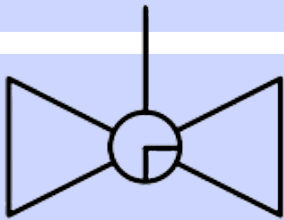
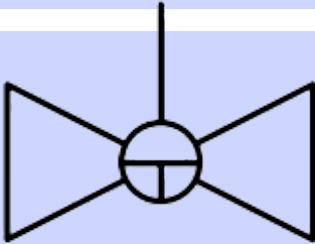
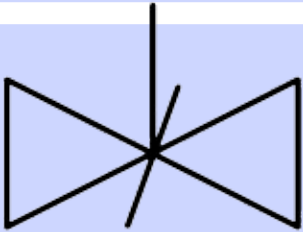
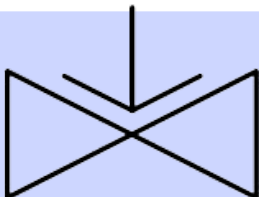


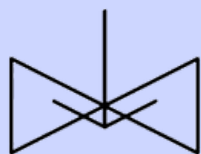
5/3- way valve, pilot operated,
pressure centre



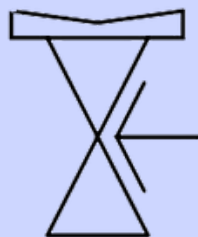
Poppet valve



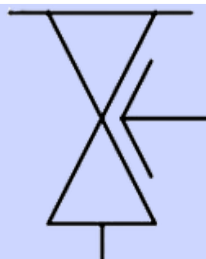
| SYMBOL | NAME / DESCRIPTION |
|---|------------------------|
|  | Angle valve, 2-way |
|  | Ball valve, 2- way |
|  | Ball valve, 3- way, L |
|  | Ball valve, 3- way, T |
|  | Butterfly valve, 2-wa |
|  | Diaphragm valve, 2-way |



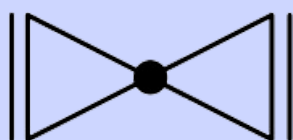
Diaphragm valve, 2-way, full bore



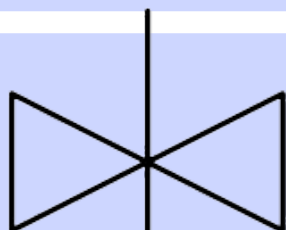
Diaphragm valve, 2-way, tank



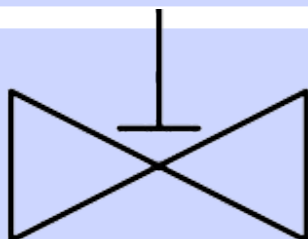
Diaphragm valve, 3-way



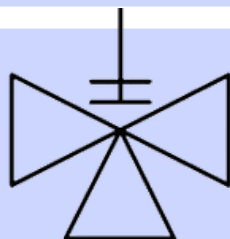
Flange valve, 2-way



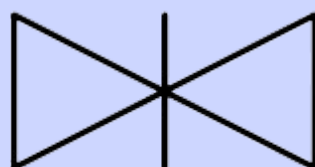
Gate valve, 2-way



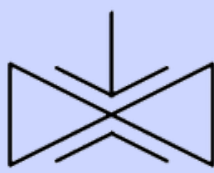
Globe valve, 2-way



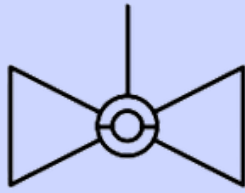
Globe valve, 3-way



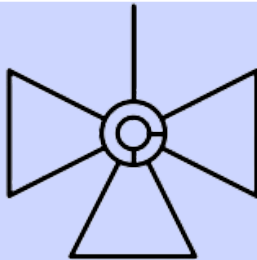
Needle valve, 2-way



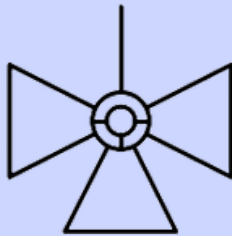
Pinch valve, 2-way



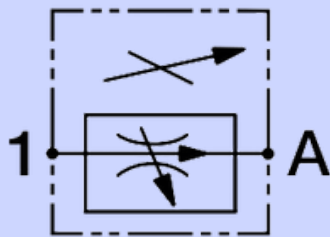
Plug valve, 2-way



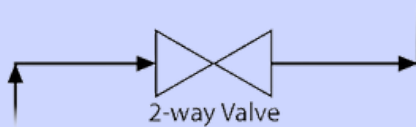
Plug valve, 3-way, L



Plug valve, 3-way, T



Proportional flow control valve,
2-way



Swing-check valve, 2-way

RETURN TO START